

IMPORTANT INFORMATION

THE CHS SHOP

The Crawley Horticultural Shop in Ifield Avenue, West Green, Crawley (tel. 01293 535585) is open in 2011 from;

SUNDAY - From 13th January until 15th December 9.00 am until 12.00 noon

SATURDAY - From 2nd March until 28th September 9.00 am until 12.00 noon

WEDNESDAY - From 3rd April until 26th June 6.30 pm until 8.00 pm

NEW MEMBERS

The CHS policy for recruiting new members is by word of mouth by you the members. Why not pass the word about the benefits of membership to like-minded friends and relations. A perfect present for a birthday or special occasion would be CHS gift voucher/token to be spent in the shop, or a membership enrolment for one or four years.

NEXT NEWSLETTER

The next Newsletter will be on the Society's website by early April with printed copies made available for Group Meetings and in the Shop.

Contact Helen Bergin, email editorial@crawleyhorticulturalsociety.org.uk

Enquiries about the Society should be addressed to the Society Secretary, email secretary@crawleyhorticulturalsociety.org.uk

SUBSCRIPTIONS

Members are reminded that annual subscriptions, and four year subscriptions which expired on 31st December 2012, should be renewed as soon as possible. Renewals can be made in the Shop or direct to the Membership Secretary, Ray Bell, 26 Bancroft Road, Maidenbower, Crawley, RH10 7WS, email membership@crawleyhorticulturalsociety.org.uk. Renewals can also be made online on the CHS website.



Crawley Horticultural Society

Spring 2013

Newsletter

Contents

Chairman's Message

AGM 28 February

Trading Report

Show Dates

Secretary's Report

Show Secretary's Report

Orchid Group Announcement

Social Committee Report

Keeping in Touch

2013 Calendar

2013 Group Programmes

Help with CHS Archive

Hire of CHS Hall

Bonsai World 2013

Anniversary Party Report

Essential Information

CHAIRMAN'S MESSAGE

Hello everybody!

Well, what a year that was!!

2012 saw us celebrating our 60th anniversary and a what a very good time was had by all. I hope you enjoyed yourselves as much as Jean and I.

At this time of year I like to thank everybody who has helped us through the year. John Green, Trading Secretary, deserves all our thanks for the hard work he puts in on behalf of the Society. Also, thanks to Trevor, the Society Secretary, and his wife Ann, for all their efforts in laying the essential groundwork and organising the 60th anniversary party. And many thanks to my wife for her contribution of the flowers to the occasion. The Committee and helpers also deserve our grateful thanks for their time and the effort they gave to the celebrations and for their services throughout the year.

I hope you all had a Very Happy Christmas and New Year festivities and look forward to seeing you in the shop and at the shows in 2013. Weatherwise, we can't have a worse year for gardening than 2012, so lets hope 2013 will be better.

FRED SMITH

ANNUAL GENERAL MEETING

The Sixtieth Annual General Meeting of the Society will be held in the Society Hall on Thursday 28th February 2013 at 7.45 pm prompt.

Agenda

1. Apologies
2. Minutes of the 59th Annual General Meeting
3. Matters Arising
4. Secretary Report
5. Treasurers Report
6. Election of President and Deputy President
7. Election of Officers and Committee
 - A Chairman
 - B Vice Chairman
 - C Secretary
 - D Treasurer
 - E Trading Secretary
 - F Membership Secretary
 - G Election of Committee

8. Election of Auditors
9. Membership Fees
10. Presidents Address
12. Any Other Business must be received by four weeks prior to 28 February 2013

Any Nominations for the election of Officers must be in writing with the Secretary 14 days prior to the A.G.M.

All nominations for election to the Management Committee should be lodged with the Secretary prior to the meeting.

Refreshments will be served after close of business. Please stay and have an informal chat with your committee. Your views are gratefully appreciated for the benefit of all.

TREVOR FIGG
Secretary



BULB SALE

The annual bulb sale will be held in the hall over the weekend of 31 August and 1 September between the hours of 9.0am and 12 noon

60th ANNIVERSARY PARTY

On Saturday 18 August, a day blessed with glorious weather, Crawley Horticultural Society held a Diamond jubilee celebration for its members and their guests. Mar-quees had been erected in the Society's garden and gaily decorated with banners and balloons. Tables and chairs were freely available for people to use and also to meet friends past and present. Each table was finely decorated with a floral centrepiece.

The hall had also been decorated, and a display covering part of the Society's history, with newspaper cuttings, posters and show programmes was on the main stage. Several of the groups had also kindly put on a display showing off exhibits for their particular group.

Food and drink was plentiful, with the usual welcoming sandwiches and cakes, and a highlight of strawberries, scones and cream, which were well enjoyed by all. Once everyone had had enough to eat, our Vice President Ron Spraget took to the stage to present an enjoyable and humorous speech about his time with the Society, both as a member, and as a serving committee member, and he thanked the present Committee for making the day such an outstanding success.

Finally, to finish the day and to mark the occasion, the secretary, Trevor Figg and Ron Spraget cut the specially made Jubilee cake, which was duly cut into pieces for everyone to enjoy.

TREVOR FIGG

HIRE OF CHS HALL

As you know, the Crawley Horticultural Hall is available for hire on an agreed basis. The following bookings may be of interest:

Cats Protection, Cats Homing Show, and goods for sale:

Sundays – open to the public 11:00 am to 3:00 pm on
6th January;
3rd March;
9th June;
8th September.

Mouse Exhibition/Show:

Saturdays – have hired from 09:00 to 17:00, but we don't know what time the public are admitted, Dates agreed:
20th April;
19th October.

Crawley Museum Society Members' meetings

(a local charity supporting Crawley Museum Centre and Ifield Watermill):
Tuesday evenings at 7:30 pm
Admission on payment of a small charge, public £2, members £1

29th January; "Lewes and Castle Acre Priors" talk by Angela Sexton
26th February; "Muck and Money – Historic Sussex Agriculture" talk by
Dr Geoffrey Mead
26th March;)
30th April;)
24 September;)Speakers To Be Advised
29th October;)
26th November.)

A date for the diary:

BONSAI WORLD 2013

After our very successful national show in September 2011, Sussex Bonsai Group are preparing for another show – Bonsai World 2013 **on the 10th and 11th August 2013** at the K2 Centre, Crawley, West Sussex.

TRADING REPORT

As we know, it was a poor year weatherwise for gardening - breaking records for the amount of rainfall. Potatoes especially fared poorly, but don't give up it can only get better

Seed potato stocks should be in by week ending 20 January, and new varieties this year will be

Orla - early,
Nadine - second early and
Harmony - maincrop

Onion sets and shallots will be available for sale by the end of January.

Compost prices are up slightly. The new stock of Sinclair compost is up considerably in price. In a statement Sinclair advise that to counteract the effect of a difficult peat harvest this year, they will be adding premium cost diluents with a high air filled porosity. These will include SuperFyba, Perlite, and pine bark which encourages rooting and good drainage.

Fingers crossed for better growing conditions for allotment holders and gardeners everywhere.

JOHN GREEN

2013 SHOW DATES

The dates for the Society's Shows are as follows:

6 April	Spring Show
15 April	Alpine Spring Show
25 May	Cactus and Succulent Show
22 June	Summer Show + Pelargonium and Geranium
3 August	Fuchsia Show
7 September	Autumn part 1
14 September	Autumn part 2

All the shows are held in the hall and are open to members and general public from 1:30 pm, except the Cactus Show which is open from 10:00 am

SECRETARY'S REPORT

Hello everyone, and welcome to the first 2013 Newsletter and a new gardening year. What challenges will be put upon us this year? Already this year we have experienced relentless wet weather, much the same as last year which in my terms was a rather "Horriblis Miserablis". But, like most keen gardeners we press on regardless, welcoming each day as we look out of the bedroom window, in the hope for a dry day and a little sunshine to get our sap flowing once more.

One thing we were blessed with last year was the fantastic weather we had for celebrating the Crawley Horticultural 60th Anniversary party! What a day it was, I hope everyone enjoyed themselves and were able to catch up with close friends. I would once again, like to thank all those who helped to make it a fantastic day.

I understand that some members failed to get an invitation for which I am deeply sorry. Most of these were people who were contacted by email which had an incorrect address. It has been highlighted on checking that over 60 were incorrect, and we have been trying to rectify the problem by various means. One way will be that when you renew your membership in the shop you will be asked to complete a separate form which has a larger space to fill in your details.

Life members will find enclosed with this newsletter a request to notify us if you have had any change in contact details. Maybe you have joined the world of the internet and have an email address that you may like to give us so that we can contact you with all the latest news regarding the Society and updated information on our fabulous web site, crawleyhorticulturalsociety.org.uk. With the cost of postage now making distribution of information a costly basis it is our aim wherever possible to provide information by email and internet.

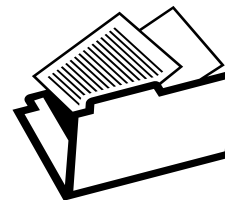
The Annual General Meeting will be held this year on Thursday 28th February and it would be nice to see you all, as numbers have been dwindling over the past few years. It is your chance to have your say regarding your Society; the way it is run or perhaps something you would like to see happening, or maybe just maybe, have yourself nominated to stand for the Committee as either an officer or dedicated committee member.

Lastly, I would like to thank all those who have given up their time in helping out in the shop, the Thursday gang, the invisible helpers, and of course you the members for supporting the Society.

Happy Gardening
TREVOR FIGG

Floral Arrangement group (cont)...

- August 8th ARTISTIC FOCUS
Hazel McGregor Nature and art – can be such an amazing combination – some surprises in store.
- September 12th WALK IN THE PARK
Pat MacDonald Autumn tints beckon...
- October 10th A.G.M. (T.B.A.)
- November 21st Open Meeting
Stephen McDonnell "CRACKING" CHRISTMAS CREATIONS
Tickets available from September onwards and venue details
- December 12th No Meeting



CHS ARCHIVE

Please help:

Following the interest shown in the small exhibition created for the 60 anniversary party in August, we are setting up an official CHS archive. We are asking that you look around to see what might be lurking in dark corners, cupboards, shelves, garages, attics for any ephemera such as papers or photographs relating to the Crawley Horticultural society.

Naturally the older the better. Especially photographs - does anybody have pictures of the time when we were building the hall and the shop?? Nothing is too small or uninteresting. Cuttings from newspapers, reports, letters, membership cards, price lists, year books, show schedules, we would be interested!

Committee member Barry Morton has volunteered to become our archivist . His address is 25 Findon Road, Ifield, Crawley, RH11 0A, telephone number Crawley 541628 and he will be waiting to hear from you.

Fruit and Vegetable Group (cont) ...

There are plenty of seed potatoes ordered and onion sets and shallots also. Dont forget there is 20% off all seed prices.

I look forward to seeing you again at the meetings in 2013.

JOHN GREEN

THE FUCHSIA & PELAGONIUM GROUP

The Fuchsia and Pelagonium Group meet on the third Wednesday of each month except August and December. See Calendar for dates.

CRAWLEY FLORAL ARRANGEMENT GROUP

Group meets at the CHS Hall on the second Thursday each month (except November and December). Doors open 7:30 pm for 8:00 pm. *Visitors and new members most welcome – phone 01293 402905 for information*

- | | |
|---------------|---|
| January 10th | Members Social Evening Come along and join in the fun also learn how to plan your garden – with advice from Linda Bradford about plants and shrubs. |
| February 14th | I WONDER IF ?
Margaret Williams Spring Creations to inspire |
| March 14th | THE PLANETS
Angie Hyde A galaxy of delights and designs ! |
| April 11th | PICK “N” MIX
Ann Meadows No.. not the sweets from Woolworths !but lots of fun with flowers |
| May 9th | STRICTLY FLOWERS
Christine Nash Just like the dance steps the vibrant flowers and intricate designs – will delight. |
| June 13th | Members Workshop - Information to come |
| July 11th | FLOWER POWER
Nel de Jong-Smith Sumptuous summer blooms and striking de signs |

SHOW SECRETARY’S REPORT

Summer Show

Sadly, this was one of the worst shows we have had for many years, and it was all down to the dreadful weather we had to deal. Many plants had either gone over early or were not out despite it being the right time for them to flower.

Naturally, this led to a drop in the number of people exhibiting and those that did couldn't find as many entries as they would have in previous years

Autumn Show Week 1

Again this show suffered badly, entries were well down and so was the number of exhibitors. There is not much I can say about this show that I haven't already said regarding the Summer show.

Autumn Show Week 2

Happily this show was much better, in the number of entries and exhibitors, although it didn't match last year's record breaking show Congratulations to all those who managed to find something to put in

The winners of our star competition were Barbara Nash and Janet Brazier. Well done to you both.

My thanks to everybody who managed to find something to put in any of the shows. Your efforts are much appreciated

I do hope that 2013 is going to be an improved year all round as far as the weather is concerned, so that we can have much better shows next year.

Show Secretary

CHRISTINE MARTIN



ORCHID GROUP

The CHS Orchid Group is currently 'on hold' pending a further decision in 6 months' time as to whether the Group will continue or not. If, after the 6 months break, sufficient numbers decide that the Orchid Group should continue, it will meet on the 3rd Sunday of each month at 2.30 pm.

SOCIAL COMMITTEE REPORT

The Social Committee, sadly, have to report that Mabel Clackson has, after more than 16 years, retired from running our Quizzes. Mabel started doing Quizzes back in the days of the now defunct Rose and Shrub Group, in January 1996, when we made a profit of £135.99! Before that we had a visiting Speaker / Quiz Master, who charged us £30 and who ran one quiz. Following that meeting, Mabel said to the committee "I can do that!". From that early beginning of a Rose & Shrub quiz for about fifty people we have developed into our now-successful run of quizzes for nearly one hundred participants. We thank Mabel for all her hard work over the years and for the thousands of pounds she has raised for the Society and charities; it has all been very much appreciated. We all wish her well in her 'retirement'.

The quizzes will continue, albeit with maybe a few new faces on the stage but, after listening to comments from our members, we will be reducing the number of tables, possibly down to 12 to 14, to facilitate easier access round the hall ('Elf and Safety, and all that), to reduce the time taken in collecting and marking the papers and to alleviate the long queues for our 'Tea Break' refreshments. As we have a number of other events in the Hall early in the year, it is anticipated that our next CHS quiz will be held in February 2013.

We have had various external bookings for our Hall through the past year. Cats Protection charity has used it for cat homing shows, also for a volunteers' meeting. The Mouse Club hired it twice for their exhibitions and shows, but not at the same time as the cats! The Portuguese Music Group has held successful meetings and the hall has been used for various family gatherings and birthday celebrations, including one hiring by a 90 year old for his son's birthday! One religious group used it to celebrate their founder's birthday and also made a generous donation to the Society when they had to cancel a second booking. One of our members hired the hall to run a fund-raising day for Lupus research. The hall has also been used for children's parties and for a pensioners' lunch event. Crawley Museum Society now holds its members' monthly winter meetings in the hall.

Probably the largest event ever held at the hall was our Society's 60th anniversary Strawberry Tea, where we catered for 240 members and their guests. Fortunately it was a hot, fine, day in August and with the help of all the Management Committee and other volunteers, we managed to source and erect marquees and gazebos, borrowed tables and chairs, decorated the hall inside and out, made and mounted a large exhibition showing the history of the Society and produced savouries, sandwiches, scones, jam and cream, cakes and, of course, strawberries and cream. It was a mammoth task for all involved, but, looking back on it, an enjoyable one for everybody.

SHEILA AND GRAHAM JONES

January		No meeting
Feb 4th	Booked	David Minnion Utah
March 4th	Booked	Chris Davies Mammillaria in Flower
April 1st	Booked	Stirling Baker Unusal Cacti
May 6th	Booked	David Neville Travels in S Mexico
May 25th	Booked	Crawley & S Show
June 3rd	Booked	Paul Klassen What I saw last winter
July 1st	Booked	Eddy Harris Fave mesembs
August		No Meeting
Sept 2nd	Booked	Jonathan Clark - Cacti and succulents in 3D
October 7th	Booked	Terry Smale TBA
November 4th	Booked	Tony Roberts The Smaller Opuntioideae – A Grower's Perspective"
December 2nd		AGM/Social

COTTAGE GARDEN GROUP

The Group meets on the first Wednesday of each month except October. At present our first speaker is in April.

Jean Griffin speaking on general plants although as she will have very recently returned from New Zealand, we hope she will speak about plants from there.

As appropriate, the programme will be updated in the Summer Newsletter

FRUIT AND VEGETABLE GROUP

The Fruit and Vegetable group meet on the second Monday of each month for illustrated talks and discussion of member's problems. See Calendar for dates. There is no meeting in January 2013 -

A small number of hardcore members still turn up for lively chat despite our lack of speakers. It is very hard to find speakers as there are few available and they are getting more expensive. However, we do hope to book some speakers for this year.

Show exhibits were very encouraging in 2012 despite the weather, so very well done to you all.

..... (cont)

GROUP PROGRAMMES FOR 2013

Except where otherwise stated, the Groups meet throughout the year in the Hall on weekday evenings at 8 pm.

THE ALPINE GROUP

The Group meets on the third Monday of each month at 8 pm. See Calendar for details.

THE BONSAI GROUP

Meetings are held every third Thursday of each month in the hall at 8pm, except December. Changes can be made to any meeting, except November, but notice will always given to members in advance

January	(
February	(
March	(Workshop
April	(
May	(
June	(
July	(To be arranged	
August	Restyle Demonstration	
September	To be arranged	
October	Workshop	
November	Annual General meeting and Social evening	

THE BRIDGE GROUP

New members will be very welcome; do come and join us.

We meet every Monday at 1.30 pm for beginners and every Friday at 7.15 pm for regular players. For further information contact the Secretary Miss Beryl Makinson 01293 402868

THE CACTUS AND SUCCULENT GROUP

The Cactus Group meets on the first Monday of the month; please note that the start time is—doors open at 7 pm and the meeting starts at 7.30pm

.....(cont)

HOW WE KEEP IN TOUCH WITH OUR MEMBERS

We issue two Newsletters a year; one in January, which is accompanied by the annual price guide and also acts as notification of the Annual General Meeting, and the other in the summer. This January edition is sent to all members. The later edition is posted on the CHS website, emailed to our mailing list and can be collected from the Shop, Group meetings, and Society events.

Every Newsletter is uploaded to the website at www.crawleyhorticulturalsociety.org.uk, where we try to keep you regularly updated with all the news and events throughout the year. All Newsletters from 2007 are available to read or download on the website.

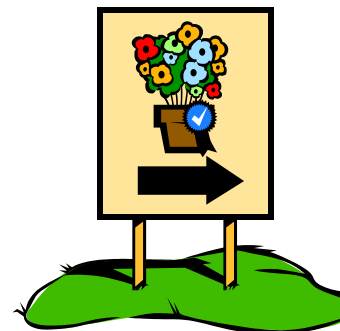
In addition, we post messages, photographs, updates, and news of events on the Society's Facebook and Twitter pages.

EMAIL ADDRESSES

Everyone is aware of the crippling cost of postage. Our small Society is trying to reduce costs and feel we can save money and offer an improved service of interesting information by using your email address. When you first join and when you renew your membership, we will ask for your current preferred email address which will enable us to send your Newsletter directly to you as well as news of current activities and events. If you change your email address, please remember to include us in your mailing notification of your new address.

2013 PLANT SALE

The annual plant sale will be held in the hall over the weekend of 18 and 19 May 2012, between the hours of 9.0am and 12 noon. Plants include annual bedding, perennials and vegetables.



CHS CALENDAR 2013

January	Wednesday 16	Fuchsia Group	8.00pm
	Thursday 17	Bonsai Group	8.00pm
February	For Quiz night Dates see notice boards		
	Wednesday 6	Cottage Garden Group	8.00pm
	Monday 4	Cactus Group	7.30pm
	Monday 11	Fruit & Veg Group	8.00pm
	Monday 18	Alpine Group	8.00pm
	Wednesday 20	Fuchsia Group	8.00pm
	Thursday 21	Bonsai Group Workshop	8.00pm
	Thursday 28	Society A.G.M.	7.45pm
March	Saturday 2	Saturday shop opens	9.00am –12 noon
	Monday 4	Cactus Group	7.30pm
	Wednesday 6	Cottage Garden Group	8.00pm
	Monday 11	Fruit & Veg Group	8.00pm
	Monday 18	Alpine Group	8.00pm
	Thursday 21	Bonsai Group	8.00pm
	Wednesday 20	Fuchsia Group	8.00pm
April	Monday 1	Cactus Group	7.30pm
	Wednesday 3	Shop opens	6.30pm—8.00pm
	Wednesday 3	Cottage Garden Group	8.00pm
	Saturday 6	Spring Show	1.30pm
	Monday 8	Fruit & Veg Group	8.00pm
	Monday 15	Alpine Group Show	8.00pm
	Wednesday 17	Fuchsia Group	8.00pm
	Thursday 18	Bonsai Group	8.00pm
May	Wednesday 1	Cottage Garden Group	8.00pm
	Monday 6	Cactus Group	7.30 pm
	Monday 13	Fruit & Veg Group	8.00pm
	Wednesday 15	Fuchsia Group	8.00pm
	Thursday 16	Bonsai Group	8.00pm
	Saturday & Sunday 18 & 19 Plant Sale In Shop hours		
	Monday 20	Alpine Group	8.00pm
	Saturday 25	Cactus Group Show	10.00am
June	Monday 3	Cactus Group	7.30pm
	Wednesday 5	Cottage Garden Group	8.00pm
	Monday 10	Fruit & Veg Group	8.00pm
	Saturday 22	Summer Show & Pelargonium Show	1.30pm
	Monday 17	Alpine Group	8.00pm
	Wednesday 19	Fuchsia Group	8.00pm

June (cont)	Thursday 20	Bonsai Group Show	8.00pm
	Wednesday 26	Last day shop open	
July	Monday 1	Cactus Group	7.30pm
	Wednesday 3	Cottage Garden Group	8.00pm
	Monday 8	Fruit & Veg Group	8.00pm
	Monday 15	Alpine Group	8.00pm
	Wednesday 17	Fuchsia Group	8.00pm
	Thursday 18	Bonsai Group	8.00pm
August	Saturday 3	Fuchsia Show	1.30pm
	Wednesday 7	Cottage Garden Group	8.00pm
	Monday 12	Fruit & Veg Group	8.00pm
	Thursday 15	Bonsai Group	8.00pm
	Monday 19	Alpine Group	8.00pm
	Sat/Sunday 31 & 1 Bulb Sale in Shop hours		
September	Monday 2	Cactus Group	7.30pm
	Wednesday 4	Cottage Garden Group	8.00pm
	Saturday 7	1st CHS Autumn Show	1.30pm
	Monday 9	Fruit & Veg Group	8.00pm
	Saturday 14	CHS 2nd Autumn Show	1.30pm
	Monday 16	Alpine Group	8.00pm
	Wednesday 18	Fuchsia Group	8.00pm
	Thursday 19	Bonsai Group AGM	8.00pm
	Saturday 28	Saturday shop last day	
October	Monday 7	Cactus Group	7.30pm
	Monday 14	Fruit & Veg Group	8.00pm
	Wednesday 16	Fuchsia Group	8.00pm
	Thursday 17	Bonsai Group	8.00pm
	Monday 21	Alpine Group	8.00pm
November	Monday 4	Cactus Group	7.30pm
	Wednesday 6	Cottage Garden Group	8.00pm
	Monday 11	Fruit & Veg Group	8.00pm
	Monday 18	Alpine Group	8.00pm
	Wednesday 20	Fuchsia Group	8.00pm
	Thursday 21	Bonsai Group	8.00pm
December	Monday 2	Cactus Group AGM	7.30pm
	Wednesday 4	Cottage Garden Group	9.00pm
	Sunday 15	Shop last day trading 2013	9.00am